

PLUGANDPLAY

Alberta
EXPO Day
Batch 2



Contents

Welcome

A note from our directors and a bit about us.

3-6

Agenda Day 1

A breakdown of today's events.

7-7

Meet the Team

An overview of our Plug and Play team

8-9

Startup Profiles

Full information on the startups in our programs.

10-42

Notes

Note the startups you'd like to connect with.

43-48

Agenda Day 2

A breakdown of tomorrow's excursions.

49-52

How to engage and use Brella

Learn more about how to engage and use Brella

53-55

Welcome

Dear Partners, Friends, and Supporters,

We are excited to welcome you to our Fall EXPO in the world-renowned Fairmont Banff Springs. One of Canada's most famous and historical destinations surrounded by mountains. We will be showcasing startups from our three industry programs: Health, Sustainability, and Sector Agnostic.

At Plug and Play, we believe we have built a world-class innovation platform. Our unparalleled global reach across 50+ locations allows us to bring startups with the right solutions in front of our corporate partners at a time when they need it most.

We support entrepreneurs to scale and grow by connecting them to our corporate partners who have aligned interests or needs. We've set out to show off what Alberta has to offer, while also attracting top technology and investments to the region to propel digital transformation across the province.

Today, you will hear from innovative scaling startups who have spent the last three months working alongside our corporate partners, investors, and mentors to accelerate innovation in their respective industries. A batch of change makers pushing the envelope of what it means to be disruptive. Interested in learning more about one of our Batch Startups? Use our Brella site or app to network and coordinate a meetup!

We hope this day will provide a glimpse of what we can achieve together, and we look forward to continuing to be part of a thriving ecosystem helping to showcase our innovative, strong and diverse economy in Alberta!

Lindsay Smylie & Kevin Dahl

Directors

Plug and Play Alberta

About Us

About Plug and Play Alberta

[Plug and Play Alberta](#) is building a world-class innovation platform to attract top technology and investment to the region and support Albertan entrepreneurs to scale and grow, hire tech talent, and propel digital transformation across the province. Plug and Play is part of the [Alberta Scaleup and Growth Accelerator Program](#) that is run by a consortium led by [Alberta Innovates](#). The consortium, which also includes [Technology and Innovation](#), [Edmonton Unlimited](#), the [Opportunity Calgary Investment Fund](#), and [Prairies Economic Development Canada](#) (PrairiesCan), allocated \$35 million over three years to retain business accelerators. It's part of the Alberta government's goal to help create 20,000 jobs and increase technology firm revenue to \$5 billion by 2030.



Founding Partners

About Alberta Innovates



Alberta innovates is the province's most comprehensive research and innovation agency. From funding to commercialization, we are Alberta's innovation engine. We foster and accelerate research and innovation to benefit citizens and drive economic growth. Our total managed portfolio impact is \$1.2 billion in value encompassing 1,320 active projects. Alberta Innovates works across sectors to fund, partner and enable entrepreneurship throughout the province. The corporation operates in 11 locations with more than one million sq ft of industrial testing and lab facilities and 600 acres of farmland. Alberta Innovates employs 589 highly skilled scientists, business and technical professionals and has an annual operating budget of \$250 million. [Learn how Alberta Innovates.](#)

About Edmonton Unlimited



Headquartered in Alberta's capital city, Edmonton Unlimited leverages, unites and promotes home-grown innovation as a gateway to solving the world's most pressing problems. We provide programs, tools, and support for Edmonton innovators, and harness the power of the public and private sectors, ground-breaking academic research and purpose-driven investment to build a shared prosperity and open international markets. From sustainable climate solutions to public health and digital education, Edmonton is a leading global centre for inspiration, ingenuity and inclusion. Learn more about [Edmonton Unlimited.](#)

About Opportunity Calgary Investment Fund



Opportunity Calgary Investment Fund was created as a wholly owned subsidiary of The City of Calgary in 2018 to support catalytic investments within the city to help diversify and transform the economy. The fund is administered by Calgary Economic Development and has a volunteer Board of Directors.

Corporate Partners



Advisory Board



Agenda Day 1

9:00–9:30

Registration

9:30–9:50

Opening Remarks

9:50–10:50

Health Startup Pitches

10:50–11:00

Break

11:00–12:30

Sustainability Startup Pitches

12:30–1:30

Lunch

1:30–3:30

Agnostic Startup Pitches

3:30–4:00

Closing Remarks

4:00–6:00

Startup Demo Tables & Networking

Meet the Team



Kevin Dahl
Director, Alberta
Plug and Play

As the Director of Plug and Play Alberta, Kevin leads our Sector Agnostic vertical and co-leads our Sustainability vertical.



Lindsay Smylie
Director, Alberta
Plug and Play

As the Director of Plug and Play Alberta, Lindsay leads our Health vertical and co-leads our Sustainability vertical.



Niall Kerrigan
Ventures & Program
Plug and Play

As a Senior Ventures Associate & Program Manager, Niall oversees our venture activities and program management in our Health vertical.



Jacob Grainger
Ventures & Program
Plug and Play

As a Ventures Associate & Program Manager, Jacob oversees our venture activities and program management in our Health vertical.



Katherine Smith
Ventures Team
Plug and Play

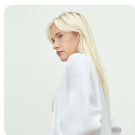
As a Ventures Analyst, Katherine oversees our venture activities in our Sustainability and Energy verticals across North America.

Meet the Team



Kristyn Coons
Program Team
Plug and Play

As a Program Manager, Kristyn oversees our accelerator programs focused on Clean Resources in our Sustainability vertical.



Nina Hill
Corporate Partnerships
Plug and Play

As a Corporate Partnerships Manager, Nina oversees the acquisition and management of our corporate partners in Alberta.



Ismail Khalil
Ventures Team
Plug and Play

As a Ventures Analyst, Ismail oversees our venture activities in our Sector Agnostic vertical.



Brady Bailey
Program Team
Plug and Play

As a Program Manager, Brady oversees our accelerator programs focused on Artificial Intelligence and Machine Learning in our Sector Agnostic vertical.

Health Startup Quick View

Innerme

Innerme is improving remote monitoring and management of chronic disease in between clinic visits.

Nimble Science

Nimble Science is providing unprecedented access to actionable health data from the gastrointestinal tract.

A4i

A4i is a patent pending, validated, digital therapeutic with a regulatory pathway for severe mental illness.

AFX Medical

AFX Medical develops applied AI for the neuro-oncology imaging workflow.

DrugBank

DrugBank is the world's first intelligent and comprehensive drug knowledge platform powering bigger research and better decisions.

Elly

Elly is a smart audio companion helping life science companies support chronic disease patients.

KEEP Labs

KEEP Labs is a Remote Therapeutic Monitoring platform building the future of patient-generated health data - with a specific focus on specialty/high-cost medication in the home.

Mindpax

Mindpax provides a digital healthcare platform for maintenance treatment of severe mental illnesses.



Health Startup Quick View



Perceiv AI

Perceiv AI is an AI-driven precision medicine company forecasting disease progression to optimize clinical trials and enable timelier diagnosis.



Saventia Health

Saventia Health transforms the diagnosis of rare diseases with AI algorithms and implementation platforms.



Syndi

Syndi is the Netflix of Digital Health - Seamlessly and intelligently connect the care, data, and money of all digital health stakeholders through an integrated aggregation and recommendation platform.

Innerme

www.innerme.io



HEADQUARTERS
Calgary, Canada

FOUNDED
2018



INDUSTRY
Chronic Diseases

STAGE
Bootstrapped

COMPANY DESCRIPTION

Promera Inc. is the Calgary-based developer of Innerme. Innerme is a digital health platform aimed at helping patients and physicians better manage chronic diseases in-between clinic visits. Patients periodically track their symptoms using patient-reported outcomes. Physicians get notified when signs of health problems begin to develop and can send a 1-way secure message back to patients. Innerme auto-bills health insurance on behalf of the physician for the messages they send to patients and earns 25% of the billed fee. This business model keeps the platform free for all users.

Nimble Science

www.nimblesci.com



HEADQUARTERS
Calgary, Canada

FOUNDED
2018



INDUSTRY
Microbiome

STAGE
Pre-Seed

COMPANY DESCRIPTION

The gut has been loosely termed our "second brain" and research increasingly highlights the central role of the gut microbiome spanning across health and illness. Its interconnections with the rest of the body and our quality of life are immense, but unfortunately our collective understanding is relatively little. Nimble Science is an early-stage medical device company advancing broad scale access to the gut microbiome through a first-in-kind ingestible capsule, a passive and inexpensive approach to supply the precision and convenience demanded by personalized medicine. In an era of individualized and digital health, quality diagnostics of the microbiome are becoming essential pre-requisites for effective and sustainable therapeutic outcomes. We are able to capture unique and valuable data sets from the deepest, most bioactive regions of the GI, translating biochemical observations into insights and digital assets for both our partners and customers. Nimble is ISO 13485 certified with a regulatory ready technical dossier and have already begun forming strategic industrial and academic partnerships around the globe in ever-expanding realms of chronic diseases, SIBO/IBS, mental health, nutrition, oncology, animal health, and so on.

A4i

www.a4i.me



HEADQUARTERS
Toronto, Canada

FOUNDED
2016



INDUSTRY
Mental Health

STAGE
Seed

COMPANY DESCRIPTION

With a focus on inclusion, support and healing, A4i has tremendous possibilities to improve the lives of millions of people living with complex mental health challenges while reducing the burden on the healthcare system. Their Mission is to extend care beyond the walls of the current mental health continuum, extend support, reduce isolation and provide insights on the risk of relapse. They help address key barriers to illness self-management and treatment engagement using an evidence-informed and empathy based adaptive digital intervention. This collaboration between MEMOTEXT Corp and Canada's largest mental health provider CAMH helps patients, families, and providers as they improve outcomes and the bottom line. The platform allows those who are isolated and experiencing challenges related to complex issues (bipolar disorder, schizophrenia, other psychoses) to connect and interact in a human + machine learning moderated feed, a patent pending audio-hallucination detector and asynchronous clinician-patient communications and uses ambient accelerometer, NLP and validated assessments to determine risk of relapse and readmission.

AFX Medical

www.afxmedical.com



HEADQUARTERS
Montreal, Canada

FOUNDED
2018



INDUSTRY
Oncology

STAGE
Seed

COMPANY DESCRIPTION

AFX Medical is a neuro-oncology startup specializing in applied AI for image processing solutions. Its patent pending, peer-reviewed technology allows for the detection of brain metastases with extremely high sensitivity and almost no false positives per study. The clinical impact will be a dramatic reduction in missed metastases, thereby allowing for optimal treatment decisions, reducing delays as well as the need for re-interventions.

DrugBank

www.drugbank.com



HEADQUARTERS
Edmonton, Canada

FOUNDED
2016



INDUSTRY
Drug Development

STAGE
Seed

COMPANY DESCRIPTION

DrugBank augments human intelligence to improve the world's health. Our suite of products are powered by the world's most complete and accurate pharmaceutical knowledge database. It includes everything there is to know about drugs and how they work in the body. We enable companies to improve healthcare delivery through precision medicine or clinical software applications as well as uncover insights through data science in drug discovery. Our knowledge base can be integrated into software solutions to help achieve clinical intelligence. Companies can easily scale their usage through our API and launch faster with flexible data modules. By providing users with advanced insights and the right information at the right time, users are empowered to make better health decisions. Our extensive, structured datasets are used to discover novel drug candidates, identify drug repurposing opportunities, and build predictive machine learning models. Companies working with data science can find answers quickly and get drugs to market faster with our evidence-based drug information. Lastly, our publicly available resource, DrugBank Online, is free-to-use with limited datasets available for download for academic and non-commercial researchers.

Elly

www.ellyhealth.com



HEADQUARTERS
Los Angeles, United States

FOUNDED
2019



INDUSTRY
Treatment Adherence

STAGE
Seed

COMPANY DESCRIPTION

Elly is a digital health startup helping life science companies support chronic disease patients. Each year, life science companies miss out on \$637B in revenue due to medication non-adherence. The company has developed and launched an iPhone app to support users' treatment adherence with a smart audio companion called Elly. Users engage with audio content around disease education, exercise & meditation practices, symptom management and other patients' stories to live healthier and happier. By offering B2B licenses for data and content, life science companies are able to understand side effect burden and provide treatment reminders to improve treatment adherence for patients receiving their drugs.

KEEP Labs

www.karebykeep.com

KEEP.



HEADQUARTERS

Toronto, Canada

FOUNDED

2019

INDUSTRY

**Treatment
Adherence**

STAGE

Seed

COMPANY DESCRIPTION

KEEP Labs is transforming the specialty medication experience in the home by passively capturing dosing events to drive personalized, real-time interventions. The KARE by KEEP platform provides patient support programs, life science organizations, pharmacies and clinicians with the ability to identify, triage and support individuals based on real-world utilization data in the home for all specialty dosage forms. The platform has been recognized as TIME Best Invention of 2020 and a CES 2020 Innovation Honouree.

Mindpax

www.mindpax.me



Mindpax.me



HEADQUARTERS

Forchheim, Germany

FOUNDED

2015

INDUSTRY

Mental Health

STAGE

Seed

COMPANY DESCRIPTION

Mindpax develops a platform for long-term maintenance management of severe mental health illnesses (bipolar disorder, major depressive disorder and schizophrenia). It uses continuous motor activity markers and patient reported mood patterns for targeted diagnostics support including early warning sign of relapse and precision medicine. This facilitates data-driven and shared decisions between patients, caregivers and clinicians. Mindpax's ability to detect behavioural change enables the development of the personalized digital therapeutics component to deliver a closed loop digital health solution. Overall, the platform empowers patients and increases their quality of life, symptom stability and treatment compliance as it helps them, their clinicians and loved ones, to better understand the condition based on personalized data insights.

Perceiv AI

www.perceiv.ai



HEADQUARTERS
Montreal, Canada

FOUNDED
2018

INDUSTRY
CNS/Cardiovascular

STAGE
Seed



COMPANY DESCRIPTION

Perceiv is an AI-based healthcare company specializing in the field of precision medicine. We are dedicated to help improving and saving patient lives through more efficient, accurate, subject targeting, and objective prognosis through advanced machine learning algorithms. Diseases are more complex than they appear resulting in problems when finding the right population to treat and demonstrate treatment efficacy. We help pharmaceutical companies improve their chances of success by identifying the right subjects for their clinical trials using our AI-driven precision medicine platform. We specialize in the identification of subpopulations of interest in heterogeneous data and complex diseases. Perceiv is currently developing applications in age-related diseases notably CNS/Alzheimer's disease and cardiovascular indications.

Saventic Health

www.saventic.com



HEADQUARTERS
Warsaw, Poland

FOUNDED
2019

INDUSTRY
AI/Rare Disease

STAGE
Seed



COMPANY DESCRIPTION

Saventic Health transforms the diagnosis of rare (hidden) diseases with AI algorithms and implementation platforms. Thanks to the use of the algorithms, our Company helps to identify patients with rare diseases in just 3-6 months instead of ~6 years (currently a status quo), reducing the cost of diagnosis and patient treatment. To date, Saventic Health has built a unique database of 5 million patients, partnering with 18 top clinics, and designing 20 AI-driven algorithms, operating in Poland, Germany and Brazil. Algorithms are developed or already commercialized among 4 main groups: (i) metabolic, (ii) blood and bone marrow, (iii) immune system, (iv) cardiology. Our implementation platforms are called Sarah Platform and Virtual Clinic Platform. Sarah Platform is dedicated for clinics and doctors, based on EHR data, integrated with clinics' IT systems. Virtual Clinic Platform gathers the data from patients (symptoms questionnaire, evidence such as photos or medical documents provided by patients) via a website with c. 13 000 monthly visits, and c. 250 submitted patients.

Syndi

www.syndi.health

Syndi⁺



HEADQUARTERS

London, United Kingdom

FOUNDED

2020

INDUSTRY

Mental Health

STAGE

Seed

COMPANY DESCRIPTION

We want to transform the way digital health services are evaluated, adopted & reimbursed through an integrated digital gateway to effective and safe digital health services that everyone can access and afford. Digital therapeutics, wellbeing apps and tele-health services have lowered barriers for patients seeking help, however, the digital health app market has become saturated, and users do not know what to choose. Of the 20k+ mental health and wellbeing services now on the market, only 2% have proven clinical benefits. When a user does try one of the mental health and wellbeing apps, there is no structured process to evaluate the clinical efficacy of the service, for that user. There is an urgent need for new reimbursement mechanisms to drive digital therapeutic adoption and payment by outcome and usage. Syndi provides customers with an integrated, personalized digital care recommendation platform, complete with anonymized population analytics, embedded within their existing web services / apps. Syndi's medically approved and patent-pending platform evaluates, recommends and drives adoption of health apps and digital therapeutics. Syndi uses machine learning to recommend services to users from a ranked and clinically reviewed formulary of partner digital health solutions.

Sustainability Startup Quick View

Aurora Hydrogen

Aurora Hydrogen is developing the next generation of hydrogen production technology.

Innova Hydrogen

Innova Hydrogen is a renewable energy company that develops innovative and proprietary hydrogen, graphite and graphene-producing technology for the energy sector.

NanosTech

NanosTech is an energy transition company; they have developed multiple nanocatalyst product solutions to reduce greenhouse gases and promote environmental stewardship.

Vertus Energy

Vertus Energy is an industrial biotechnology company converting waste into fuel. They control biology, specifically bacteria behaviour, to generate 60% more energy; 3 times faster than ever before from the same amount of waste.

Digital Carbon Bank

Digital Carbon Bank creates blockchain-based offsets for the voluntary market that ties cryptocurrency to specific emission-reducing projects, then use credible hard-tech measurement technologies and GHG accounting to validate real emission reductions.

Devecitech

Vertically integrated wind turbines.

Sustainability

Startup Quick View

Minera Systems

Minera Systems captures and monetizes CO₂ by installing carbon capture systems at industrial compost facilities. Minera Systems then sells carbon removals and shares the revenue with the facility operators.

TerraFixing

TerraFixing is a Canadian direct air carbon capture startup with the only DAC technology viable in Alberta and 99% of Canada.

Carbon Cantonne

Building carbon removal solutions through generating energy from the conversion of CO₂ as fuel and into a value-added solid carbon product.

qualiTEAS

qualiTEAS is a corrosion inspection and management company, aiming to transform asset integrity inspection practices with its AI solution.

SWIFT

We make EV charging affordable and accessible for everyone.

Vortis

Vortis is a carbon management company based in Calgary, Alberta focused on developing simple and affordable ways to capture, convert, and market CO₂ emissions.

Sustainability Startup Quick View

element 4

element 4 produces battery less, energy-independent and modular sensor technology that is adaptable to any environment.

SolarSteam

SolarSteam delivers renewable heat to industrial and institutional clients through enclosed concentrated solar technology and is a game-changer to reduce their costs and emissions.

Crbon Labs

Crbon Labs reduces GHG emissions by acquiring high-intensity oil and gas wells, decommissioning them, restoring the land to its original state, and making carbon credits for sale to corporations and individuals. They make climate change impact by turning oil and gas liabilities into carbon assets.

Rocsole

Rocsole provides production optimization tomography solutions for processes to enable max production and lower OPEX.

Aurora Hydrogen

www.aurorahydrogen.com

HEADQUARTERS

Edmonton, Canada

FOUNDED

2021

INDUSTRY

**Hydrogen/
Alternative Fuels**

STAGE

Series A



COMPANY DESCRIPTION

Aurora Hydrogen is developing the next generation of hydrogen production technology.

Innova Hydrogen

www.innovahydrogen.com

HEADQUARTERS

Calgary, Canada

FOUNDED

2021

INDUSTRY

**Hydrogen/
Alternative Fuels**

STAGE

Series A



COMPANY DESCRIPTION

Innova Hydrogen is a renewable energy company that develops innovative and proprietary hydrogen, graphite and graphene-producing technology. The company's revolutionary technology transcends existing carbon emission processes currently used within the energy sector by creating valuable products with zero carbon emissions: clean hydrogen gas and customizable, tailor-made graphite and graphene. Innova's current intellectual property includes patent pending technology for hydrogen, graphite and graphene production, which will be relied upon to support a global patent protection strategy, and a roadmap for additional proprietary advancements in clean energy technology. Innova was founded in 2021 and is based in Calgary and Edmonton, Alberta.

NanosTech

www.nanos.tech

HEADQUARTERS
Calgary, Canada

FOUNDED
2012

INDUSTRY
**Hydrogen/
Alternative Fuels**

STAGE
Series A



COMPANY DESCRIPTION

NanosTech believes in evolution, not revolution. Our innovations support the economic and environmental sustainability of the energy sector. NanosTech, a Vorsana Company, emerged from the University of Calgary's Alberta Ingenuity Centre for In-Situ Energy (AICISE). A Canadian powerhouse of innovation in catalysts and adsorbents for energy and fuels, AICISE encourages and promotes an environmentally sustainable, efficient, circular-economy approach to improve recovery and upgrading of Alberta's bitumen reserves.

Vertus Energy

www.vertusenergy.com

HEADQUARTERS
**Auckland, New
Zealand**

FOUNDED
2021

INDUSTRY
**Hydrogen/
Alternative Fuels**

STAGE
Seed



COMPANY DESCRIPTION

Vertus Energy is accelerating the world's transition to green energy. Its BRIO™ technology turbocharges the production of green fuel from waste and generates a more powerful biofuel, producing 60% more energy from the same amount of waste while also processing three times the amount of waste than any other system on the market. Vertus Energy has two main technologies: BRIO: A small but powerful unit that lives inside the anaerobic digester. BRIO allows AD plants to process three times more waste in the same sized tank while delivering biogas with 60% more energy potential than ever before. BODA, is carbon sequestration and conversion technology. BODA can either be used to "upgrade" the biogas from AD into Bio-methane or it can capture raw CO₂ and convert it into Renewable Natural Gas. BODA is a unit that "eats" CO₂ and H₂ to produce Renewable Natural Gas.

Digital Carbon Bank

www.digitalcarbonbank.ca



HEADQUARTERS
Calgary, Canada

FOUNDED
2021

INDUSTRY
**CCUS & Emissions
Reductions**

STAGE
Seed



COMPANY DESCRIPTION

The Digital Carbon Bank (DCB) enables climate action by providing blockchain-based voluntary market carbon offsets that tie cryptocurrency to specific emission-reducing projects. The DCB then uses credible hard-tech measurement technologies and GHG accounting to validate real emission reductions so that tokens are robust, transparent, and bankable.

The DCB Platform has four differentiators:

- The platform creates liquidity by providing a pathway to mobilize more environmental projects through the issuance of GHG offset Tokens in exchange for project investment.
- The platform will act as a broker to market emission-reducing projects from 3rd party delivery organizations (local delivery partners).
- Emitters and impact investors can purchase offset Tokens to hold and trade as investments or use them to reduce carbon liability.
- 3rd party validation of specific projects will be done using hard-tech Measurement, Monitoring and Verification technologies (as appropriate including, satellite, airplane, drone, land-based, and subsurface) by verification delivery partners.

Devecitech

www.devecitech.com



HEADQUARTERS
**Maasvlakte Rotterdam, 2017
Netherlands**

FOUNDED

INDUSTRY
Renewable Energy

STAGE
Bootstrapped



COMPANY DESCRIPTION

ENLIL is a smart vertical axis wind turbine project that transforms highways into renewable energy sources by using the dynamics of the city. It also provides comfort and safety to the city thanks to the built-in sensors and an intelligent platform. By placing the hybrid vertical axis wind turbine (including a solar panel on top of it) on highways, "Metrobus lines" and other transportation lines as well as high-rise residences, ENLIL will generate energy by using the winds created by the vehicles as well as the natural winds. It will measure the city's temperature, humidity, wind and CO2 by using the built-in sensors and the IOT platform. The measurements made by ENLIL will be used on the carbon footprint map to provide the comfort of the city and it will also contribute to the safety of the city by providing information on possible earthquakes in Istanbul with the earthquake monitoring station. Also, a mobile app will provide information and data about the generated energy and measurements made by ENLIL, to whoever needs it.

Minera Systems

www.minerasystems.com



HEADQUARTERS
Squamish, Canada

FOUNDED
2021



INDUSTRY
**CCUS & Emissions
Reductions**

STAGE
Bootstrapped

COMPANY DESCRIPTION

Through the release CO₂ during controlled decomposition, compost facilities are missing a huge opportunity to increase their climate impact and generate additional revenue. At Minera, we're working towards deploying equipment that captures both of these missed opportunities. Our small-scale modular systems will be installed at these facilities at no cost to the operators. We will capture the CO₂ released at these facilities and sell carbon removal to companies looking to offset their hard-to-abate emissions. We'll then share the revenue with the facility operators.

TerraFixing

www.terrafixing.com



HEADQUARTERS
Ottawa, Canada

FOUNDED
2020



INDUSTRY
**CCUS & Emissions
Reductions**

STAGE
Bootstrapped

COMPANY DESCRIPTION

TerraFixing are distinctive in their strategy to capture, concentrate, and sequester CO₂ to enable the world reach net-zero emission targets, and going beyond. They use a unique adsorption based process and by placing their process in desirable cold-dry climates, they can achieve the lowest operating and capital costs in the DAC industry. The working material of their process are zeolites which are known to be inexpensive and robust, and that are industrially available. Having surface areas of over 800 m²/g, our proprietary zeolites are effective supermaterials for capturing CO₂ from cold and dry air via adsorption whereby the CO₂ is selectively captured on the surface. TerraFixing employs its secret-sauce zeolites in a temperature vacuum swing adsorption process in which CO₂ is captured at ambient conditions and then isolated at high purities for sequestration. TerraFixing's IP protected technology is simple: only 5 unit operations. Operating energies as low as 1 MWh/tonCO₂ can be achieved when operating in cold dry climates, leading to record low capital costs and operating costs for DAC.

Carbon Cantonne

www.carboncantonne.com

HEADQUARTERS
Calgary, Canada

FOUNDED
2021

INDUSTRY
**CCUS & Emissions
Reductions**

STAGE
Pre-Seed



COMPANY DESCRIPTION

Carbon Cantonne empowers carbon removal to utilize novel net-negative CO2 solutions that accelerate the return of clean air. Cantonne's technology takes concentrated CO2 from capture sources, like air or exhaust gas, and turns it into marketable graphite that can be used for lithium batteries and reinforced concrete. Their unique approach minimizes the need for external power sources due to the large heat produced by the reaction, which is recycled for heating internal processes with plenty of excess heat to supply to capture operations. A megatonne / year scale plant can convert captured CO2 into value-added product at under \$10 per tonne. Cantonne was founded in November 2021 by researchers at the University of Calgary with a passion for CCUS research. Their team entered into the XPRIZE Carbon Removal competition and reached the Top 50 out of over 1100 contestants in the first milestone round.

qualiTEAS

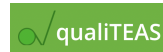
www.qualiteas.ca

HEADQUARTERS
St. John's, Canada

FOUNDED
2018

INDUSTRY
Oil/Gas/Mining

STAGE
Seed



COMPANY DESCRIPTION

qualiTEAS is a Canada based corrosion inspection and management company. Besides specialized services, we have developed a machine learning based computer vision technology (Argus 1.21) capable of analyzing asset images to assess any impact(s) due to corrosion. This digital inspection solution can further augment the on-site asset inspection, as a part of digital twin application that can further complements the predictive maintenance practices.

SWIFT

www.swiftcharge.io



HEADQUARTERS

Edmonton, Calgary

FOUNDED

2020



INDUSTRY

**EV/Autonomous
Driving**

STAGE

Pre-Seed

COMPANY DESCRIPTION

EV Charging has never been a software or hardware problem. It is an electrical grid infrastructure problem. With our proprietary charging technology, we are here to de-bottleneck the grid infrastructure and to truly enable a widespread EV charging network.

Vortis

www.vortis.ca



HEADQUARTERS

Calgary, Canada

FOUNDED

2022



INDUSTRY

**CCUS & Emissions
Reductions**

STAGE

Seed

COMPANY DESCRIPTION

Vortis is a carbon management company based in Calgary, Alberta focused on developing simple and affordable ways to capture, convert, and market Co2 emissions. Over the past three years, in partnership with the University of British Columbia's Clean Energy Research Centre, we have developed a novel approach to carbon capture that uses motion and vortex separation to separate CO2 based on its molecular weight. While molecular separation has commercially been proven in applications such as uranium enrichment, it has been overlooked for gas separation and carbon capture due to the need for high rpm's, energy, and costs required to create the high g-forces necessary for separation. Vortis has developed a novel way to overcome these hurdles by creating high g-forces at extremely low RPMs and energy. This approach is a new technology pathway for carbon capture. Our approach is to apply this technology for point-source emissions targeting large emitters in the oil and gas, steel, and cement industries. Over the long term, we believe there are also opportunities to apply this technology to DAC applications.

Element 4

www.element4.ca



HEADQUARTERS
Edmonton, Canada

FOUNDED
2021



INDUSTRY
Renewable Energy

STAGE
Pre-Seed

COMPANY DESCRIPTION

Existing Internet-of-Things (IoT) sensor solutions are expensive and not adaptable. Furthermore, products currently available to industry are reliant on rechargeable batteries which require periodic replacements and have detrimental environmental repercussions. Element 4 has developed a proprietary battery-free and energy-independent IoT sensor: E4 is a 'core' component, capable of operating on its own with a core set of sensors, as well as with the assistance of 'sub-modules' to function like an app store for sensors.

SolarSteam

www.solarsteam.ca



HEADQUARTERS
Calgary, Canada

FOUNDED
2017



INDUSTRY
Renewable Energy

STAGE
Seed

COMPANY DESCRIPTION

SolarSteam, est. 2017 as Alberta corporation, is a hard climate tech startup focused on the development and commercialization of a novel enclosed concentrated solar technology delivering renewable heat to industrial and institutional clients in extreme climates. The technology offers plug-and-play integration into brownfield and greenfield facilities in heat-intensive industry markets such as petrochemical production, bio-refineries, cement and steel production, hydrogen production, pulp & paper manufacturing, district heating & cooling, food processing and alcohol/beverages production. SolarSteam's system operates in conjunction with existing boiler systems, using boiler-fed water or heat transfer fluids to provide hot water and steam generation at temperatures up to 350°C. Distinguishing this technology from competitors is its modularity, tailoring to all climates, including northern climates, and capacity to decrease fuel consumption and carbon costs by displacing quantities of carbon dioxide produced by traditional heat generation and enabling companies to meet their 2030 and 2050 targets without investing in stranded assets and amortizing expensive existing OPEX.

Crbon Labs

www.crbonlabs.com



HEADQUARTERS
Calgary, Canada

FOUNDED
2021

INDUSTRY
GHG Reduction

STAGE
Seed



COMPANY DESCRIPTION

Crbon Labs was founded by former oil and gas industry executives. Crbon Labs believes in Net Zero by 2050 targets and is aligned with UN Global Goals of clean affordable energy and climate action. We are committed to making a climate change impact by decarbonizing the energy value chain. The problem we solve is the Net Zero by 2050 Demand-Supply Gap, by turning oil and gas liabilities into carbon assets. Crbon Labs acquires supplies of high GHG intensity oil and gas wells, accelerates decommissioning the wells to immediately and permanently reduce emissions and make carbon credits for sale to corporate customers. World carbon credit demand will grow 100x up to 12 Gt CO₂e per year by 2050. The North American energy industry is a virtually untapped supply of carbon offsets, emitting over 300 million tonnes of excess CO₂e per year. Over 70% of industry emissions come from less than 10% of its production. Crbon Labs has established carbon credit pathways to market, sourced a supply of high-emitting wells, found its first carbon credit buyer and received Alberta Energy Regulator approval to hold well licenses. They have assembled a world-class team to make carbon credits from closing the wells.

Rocsole

www.rocsole.com



HEADQUARTERS
Kuopio, Finland

FOUNDED
2012

INDUSTRY
**Production
Optimization**

STAGE
Series B



COMPANY DESCRIPTION

Rocsole is the leading smart process imaging company. With AI & deep learning prediction solutions they support operational teams to reduce OPEX, to avoid unplanned shutdowns, and monitor product quality to increase revenues. Established in 2012, and venture-backed by Shell, Repsol and Equinor, the company serves some of the largest oil and gas companies in the world, along with other industries, such as electronics, pulp & paper, FMCG, mining and more. They provide data to get facilities to perform at maximum with in-depth process knowledge in real-time with tomography. Our field-proven and award-winning technology for process-related imaging and services are applied on offshore and onshore pipelines, tanks, and separators. We aim to support automated, digitalized, and unmanned platform operations. We are contributing to the energy transformation with improved energy efficiency, and improved process control/monitoring for reduced GHG emissions.

Agnostic Startup Quick View

Cyder

Cyder is a data trust designed to balance the privacy and data needs of users and corporations. The platform works seamlessly within the user's browser to protect their privacy and provide compensation whenever the user chooses to share their information.

Ubiik

Ubiik builds private wireless networks for IoT based applications.

Levr

Levr is on a mission to transform the way businesses access financing. The world of business lending is complicated, and existing options for obtaining a loan are expensive and time-consuming, for both lenders and borrowers.

Soffos

Soffos is a Tech company that provides low-code AI solutions for developing advanced NLP applications that include knowledge management, learning and assessment tools, question-answering and performance guidance systems.

TruEra

TruEra provides the first AI quality software system, to help enterprises continuously explain, evaluate and monitor machine learning models.

AlignVR

AlignVR is the cure for ineffective job interviews; creating a better way to hire, train, and coach employees.

Trust Science

Credit Bureau 2.0 @ SaaS. Customers are lenders serving consumers--lenders who demand a modern Decision System platform and alt.data.

Agnostic Startup Quick View

EasySend

EasySend is a no-code platform that empowers organizations to transform complex forms, customer data intake and signature collection processes into easy digital experiences.

Breathing.ai

Adaptive workstations to reduce stress and improve performance for enterprises and individual consumers.

Chata

Chata builds an API-first solution that empowers non-technical business users with easy-to-use self-service analytics.

Flahmingo

Flahmingo is a DIY investment app that supports commission-free fractional investing, where users can begin investing with as little as \$1. At Flahmingo, we re-imagine financial education to make investing simple, social, and for everyone!

Skan AI

Skan's AI technology delivers unbiased details behind how work really gets done in your organization with zero system integration and zero disruptions to work.

ZayZoon

ZayZoon provides customers with access to wages on-demand through integration with payroll partners, giving employees control over their paycheck, reduced financial stress and eliminated the need to take on unnecessary debt.

goPeer

goPeer is a Toronto-based financial technology company that connects modern investors with credit-worthy Canadians looking for a loan.

Propra

Propra is an all-in-one property management platform that reduces operating costs and increases profitability while elevating the tenant experience.

Agnostic Startup Quick View

Benefi

Benefi provides a platform that allows companies to reinvent how they attract and retain talent. We do this by offering a better way to issue signing and retention bonuses.

Wafi

Wafi enables e-commerce businesses to accept bank payments at checkout and save on payment processing fees.

EAIGLE

EAIGLE is a human-centric computer vision platform company. EAIGLE's AI provides large enterprises with real-time curated alerts and operational insights derived from vision data from existing camera and sensor feeds.

Railz

Railz API provides financial institutions and fintechs with instant, real-time access to their business customers' financial data from different sources such as accounting, banking, tax and commerce to make better data-driven decisions.

Spontivly

Spontivly is a community management platform that helps organizations measure success, drive engagement, and increase customer lifetime value.

Spiro

Spiro is the first Proactive Relationship Management platform. Natively built on artificial intelligence, Spiro consolidates CRM capabilities, sales enablement and analytics into a single platform.

Cyder

www.getcyder.com

HEADQUARTERS

Waterloo, Canada

FOUNDED

Undisclosed

INDUSTRY

Fintech

STAGE

Seed



Cyder.



COMPANY DESCRIPTION

A simple and free extension to improve your browsing experience, secure your data, and earn royalties. Cyder is a trust for your data. We protect the data you share, block third parties from accessing your information, and pay you tokens for using Cyder's ad platform. Cyder helps you control your data & earn royalties. When you use the internet, social media, or a mobile device, you are creating one of the world's most valuable assets. Data. Every day organizations harvest this data to make money. At Cyder, we aim to challenge the status quo and return control and profits from your data and attention back to you.

Ubiik

www.ubiik.com

HEADQUARTERS

Taiwan, China

FOUNDED

2016

INDUSTRY

B2B SaaS

STAGE

Series A



UBIIK



COMPANY DESCRIPTION

Ubiik has developed a new long range wireless technology called Weightless LPWAN (low power wide area network) for smart cities and factory sensor networks. The base station allows multiple kilometers of range in a dense urban environments and can connect thousands of end devices. The technology has very low power consumption allowing battery-powered end-devices/sensors to enjoy years of battery life. Ubiik has leveraged Weightless to produce a series of vertical solutions. [Utilities] The tender-winning, wireless AMI (advanced metering infrastructure) solution consists of outdoor Weightless base stations, customized Weightless enddevice modules for smart meters, and software head-end system. [Factory Sensor Network] Factories deploy Weightless base stations to cover their desired environments (indoor/ outdoor). Ubiik can integrate the Weightless "end device module" into ANY sensor IoT device to allow wireless, reliable connection to the Weightless base station.

Levr

www.levrfinance.com

HEADQUARTERS
Vancouver, Canada

FOUNDED
2021

INDUSTRY
Fintech

STAGE
Bootstrapped



COMPANY DESCRIPTION

Levr is a secure and user-friendly platform that simplifies the entire process of applying for and managing a businesses loans. They provide a place for efficient ongoing communication and support between businesses and lenders. Levr is an easy-to-use online software that helps businesses to get the loans they need quickly and with minimal stress. It has been designed so that everyone involved can seamlessly upload, organize, track, and discuss all the documentation required to obtain a business loan in one place. Conveniently, all of the documents, communication and financial information are kept within one secure digital filing system for record-keeping and to give businesses a head start on their next loan application or loan monitoring requirements.

Soffos

www.soffos.ai

HEADQUARTERS
Austin, United States

FOUNDED
2018

INDUSTRY
B2B SaaS

STAGE
Seed Funding



COMPANY DESCRIPTION

Soffos is an AI-powered, SaaS learning platform for corporations. Adding knowledge to Soffos is as simple as dragging and dropping files into folders and specifying access permissions. Our AI converts the content in the documents into knowledge and allows employees to ask questions and have a natural language conversation with Soffos. Searching for files and reading documents is old school; Soffos liberates the knowledge!

TruEra

www.truera.com

HEADQUARTERS

Redwood City, United States

INDUSTRY

B2B SaaS

FOUNDED

2018

STAGE

Series B

truera



COMPANY DESCRIPTION

TruEra provides the first AI quality software system, to help enterprises continuously explain, evaluate and monitor machine learning models. Powered by unique AI Explainability technology based on 7 years of research at Carnegie Mellon University, TruEra's Diagnostics and Monitoring products help ML teams develop higher quality models faster, build trust with stakeholders to speed up adoption, fill the critical monitoring gap in MLOps and comprehensively address governance and regulatory compliance concerns. TruEra's AI explainability and quality technology devised by Co-founders Anupam Datta, President & Chief Scientist, TruEra and Professor, CMU and Shayak Sen, CTO, addresses deficiencies in the industry's first-generation Open Source software, enabling faster and more accurate AI explanations and analytics.

AlignVR

www.alignvr.com

HEADQUARTERS

Edmonton, Canada

INDUSTRY

B2B SaaS

FOUNDED

2017

STAGE

Bootstrapped

 **ALIGNVR**



COMPANY DESCRIPTION

AlignVR has a unique technology that produces natural, observable behaviors that can be used for assessing or training soft skills — allowing for a far more accurate evaluation than traditionally available. The core focus of our tech is on reducing the impact of something called Impression Management: the psychological term describing the mental effort we put into trying to inflate, filter or generally manage the impression we make on someone we interact with. People naturally use this in the workplace, when being observed (such as in team building activities) and in job interviews, frustrating the attempts to properly evaluate soft skill strength. We use VR and psychology to inhibit a person's ability to use impression management and induce behaviors of interest in a virtual environment. Corporations observe these behaviors and use them to assess, build and improve their teams.

Trust Science

www.trustscience.com

HEADQUARTERS
Edmonton, Canada

INDUSTRY
Fintech

FOUNDED
2014

STAGE
Undisclosed

CREDIT BUREAU™ BY
**TRUST
SCIENCE.**



COMPANY DESCRIPTION

Accurately predict creditworthiness of borrowers. B2B Fintech SaaS. A decision system/platform delivering scores in real-time about loan applicants. Superior to old, multi-Billion\$ bureaus like Equifax, TransUnion, Experian, FICO & LexisNexis/RELX. Very predictive--but not limited to--scoring subprime consumers (uncover the "Invisible Primes".) 40+ patents granted across 13 countries, including US, China, Japan, Israel & Brazil, with proven barrier-to-entry (offensive value) in US Federal infringement action...and with another 40 more patents pending which will also cover more countries. Compliant with all relevant laws & regulations e.g. FCRA & ECOA in the U.S., PIPEDA in Canada. Early/embryonic market development in Africa and Central America. Future, adjacent vertical will be fit-for-purpose scores for the Insurance underwriting sector...i.e. in the 'Expand' phase of a strategy to "Land & Expand".

EasySend

www.easysend.io

HEADQUARTERS
Tel Aviv, Israel

INDUSTRY
B2B SaaS

FOUNDED
2016

STAGE
Seed

 **EasySend**



COMPANY DESCRIPTION

EasySend is a no-code customer experience platform for building and optimizing digital customer journeys. EasySend helps enterprises go digital by converting paper, PDFs, and manual processes into fully-branded customer journeys for any use case. With the platform, users can design, build and launch digital customer processes in days, and continually optimize with advanced analytics. The EasySend platform improves the customer experience, cuts operational costs, and drives revenue growth.

Breathing.ai

www.breathing.ai



HEADQUARTERS
Toronto, Canada

FOUNDED
2018



INDUSTRY
B2B SaaS

STAGE
Pre-Seed

COMPANY DESCRIPTION

Our AI-patented digital health startup breathing.ai (Techstars '21) provides the most engaging employee wellness offer based on award-winning scientific research and with global traction (users in 137 countries, 25 press articles including Forbes) and first sales to companies across industries in Europe and the US to tackle the #1 problem of low employee engagement for companies globally (\$7.8T). Our first product provides relaxing screen experiences personalized to each screen user - without additional screen time - with personalized break cues, color filters and soothing sounds for corporate wellness (\$6.6B market) meeting the screen users where they are effortlessly. Our long-term vision is to bio-adapt screens and audio interactions via our AI-patented "Adaptive Interfaces" to improve well-being and performance in real-time for truly bio-personalized lifestyles.

CHATA

www.chata.ai



HEADQUARTERS
Calgary, Canada

FOUNDED
2017



INDUSTRY
B2B SaaS

STAGE
Series A

COMPANY DESCRIPTION

Chata builds AutoQL, a powerful API-first solution that empowers non-technical business users with easy-to-use, self-service analytics. Through the dynamic translation of natural language into database query language(s), business users receive instant data responses, empowering them to make informed data-driven decisions. By reduced reliance on data and IT teams, this allows Analysts to leverage the core competencies of their data team for higher-value projects & complex tasks. With intuitive, real-time access to data, users can easily understand the details underlying KPIs and gain critical insights that drive informed decisions and help propel their business forward.

Flahmingo

www.flahmingo.com



HEADQUARTERS
Calgary, Canada

FOUNDED
2020



INDUSTRY
Fintech

STAGE
Seed

COMPANY DESCRIPTION

Flahmingo is a native mobile application that allows DIY investors to begin investing with as little as \$5. Using our proprietary Pies and Slices technology, Flahmingo enables users to build a portfolio of their favourite companies and exchange traded funds (ETFs). Using scheduled deposits and automatic round ups (both investment automation strategies), users seamlessly grow and maintain a diversified portfolio through the purchase and sale of fractional shares'. These fractional shares allow Flahmingo users to own as little as \$1 in companies like Tesla, Alphabet, Amazon and even Berkshire Hathaway.

Skani AI

www.skani.ai

Skani^{AI}

HEADQUARTERS
Menlo Park, United States

FOUNDED
2020



INDUSTRY
B2B SaaS

STAGE
Series B

COMPANY DESCRIPTION

Skani's virtual process agents – a non-intrusive and lightweight probe on agent desktops or virtual machines – observes human work at scale capturing essential keystrokes and system interactions. Skani's cognitive engine synthesizes the resulting images and stitches them into a process footprint, including all the process permutations and combinations. Skani's evidence-based, data-driven approach enables enterprises to model, simulate, and monitor processes including automation and transformation. Skani's cognitive engine has three components – a virtual process analyst, a gateway to process and synthesize image streams, and cloud-based machine intelligence models. Companies can define inclusion and exclusion lists of applications and websites. Skani's selective data masking technique prevents recording sensitive data fields and inputs. Skani's artificial intelligence technology does not require any expensive and time-consuming backend integration.

ZayZoon

www.zayzoom.com

HEADQUARTERS

Calgary, Canada

FOUNDED

2014

INDUSTRY

Fintech

STAGE

Series A



COMPANY DESCRIPTION

ZayZoon provides customers with access to wages on demand through integration with payroll partners, giving employees control over their paycheck, reduced financial stress and eliminated the need to take on unnecessary debt. The company was founded in 2014 and is based in Calgary, Alberta.

goPeer

www.gopeer.ca

HEADQUARTERS

Toronto, Canada

FOUNDED

2018

INDUSTRY

Fintech

STAGE

Seed



COMPANY DESCRIPTION

goPeer is a financial wellness company and Canada's first regulated consumer peer-to-peer lender, connecting borrowers and investors through an online marketplace. goPeer replaces banks and traditional financial institutions to provide better rates to borrowers while creating a new investment opportunity available to all Canadians.

Benefi

www.benefi.ca

HEADQUARTERS
Toronto, Canada

INDUSTRY
B2B SaaS

FOUNDED
2020

STAGE
Pre-Seed



COMPANY DESCRIPTION

Benefi is a B2B2C/SAAS that is reinventing how companies attract, retain, and engage talent. We're on a mission to build meaningful relationships between employers and employees by shifting how signing and retention bonuses are paid. Early distribution partners that we've acquired really love the ability of our product to solve a timely and critical employer issue. We focus on employers with at least 20 employees that find churn painful; this includes tech, manufacturing, legal, and healthcare, and have just signed a major distributor of group benefits.

Wafi

www.wafi.cash

HEADQUARTERS
Dublin, United States

INDUSTRY
Fintech

FOUNDED
2021

STAGE
Pre-Seed



COMPANY DESCRIPTION

Wafi provides a simple API and drop in UI that makes it easy to send and receive instant bank payments. Built on the RTP network, Wafi enables ecommerce businesses to accept payments via bank accounts instead of credit/debit cards and save on payment processing fees.

EAIGLE

www.eaigle.ai



HEADQUARTERS
Toronto, Canada

FOUNDED
2018



INDUSTRY
B2B SaaS

STAGE
Seed

COMPANY DESCRIPTION

Who We Are: We are a human-centric Artificial Intelligence and Machine Learning company developing enterprise computer vision solutions for the workplace and public spaces. Our solutions enable customers to optimize processes, reduce costs and grow revenues. Our purpose is to change the way people think about Artificial Intelligence by creating a wide variety of human-centric AI solutions that enhance the performance of humans and enterprises globally. Our vision is to become the world's most trusted AI enterprise solution provider in the next 10 years. **Who We Help:** We work with global enterprises in a wide range of sectors including retail, supply chain, logistics and commercial real estate. Our technology enables our customers to identify inefficiencies in their operations or breaches in their policies all in real-time notifications or alerts.

RAILZ

www.railz.ai



HEADQUARTERS
Toronto, Canada

FOUNDED
2020



INDUSTRY
Fintech

STAGE
Series B

COMPANY DESCRIPTION

Railz delivers a simple Accounting Data as a Service API to any lender, financial institution, accounting firm, auditor and tech developer that requires financial data on its small business customers. Our platform is integrated with the largest accounting systems in the world and automates a process that is otherwise very manual and labor intensive. Our API enables our clients to assess their Small Business customers' financial health by receiving accurate and immediate data from known sources for both existing customers and new applicants. Think of Railz as Plaid...for Accounting.

Spontivly

www.spontivly.com



HEADQUARTERS
Edmonton, Canada

FOUNDED
2019

INDUSTRY
B2B SaaS

STAGE
Pre-Seed



COMPANY DESCRIPTION

Spontivly, a community management platform that helps organizations measure success, drive engagement, and increase customer lifetime value.

Spiro

www.spiro.ai



HEADQUARTERS
Boston, United States

FOUNDED
2014

INDUSTRY
B2B SaaS

STAGE
Series A



COMPANY DESCRIPTION

Spiro is the first Proactive Relationship Management platform. Natively built on artificial intelligence, Spiro consolidates CRM capabilities, sales enablement and analytics into a single platform. By connecting to your email, calendar, phone and internal business systems, Spiro can: -automatically create, update and manage your pipeline -give proactive recommendations about how to close deals -provide alerts on when to act based on real time triggers -Provide advanced analytics without the need for data entry Common use cases for Spiro are for mobile sales teams, customer success, increasing account health, or anyone looking to improve customer engagement and follow up.

Propra

www.propra.ca

HEADQUARTERS

Calgary, Canada

FOUNDED

2021

INDUSTRY

Fintech

STAGE

Bootstrapped

propra



COMPANY DESCRIPTION

Propra is an all-in-one property management platform that reduces operating costs and increases profitability while elevating the tenant experience. With Propra, you can manage your resident requests and financials from a single browser tab.

Notes

Notes

Notes

Notes

Notes

Notes

Notes

Notes

Notes

Notes

Notes

Notes

Agenda Day 2

Banff Townsite & Wildlife Viewing Tour

Excursions sponsored by Edmonton Global.

48

Lake Louise Winterland Tour

Excursions sponsored by Edmonton Global.

49

Johnston Canyon Icewalk

Excursions sponsored by Edmonton Global.

50

Optional Excursions



Banff, Alberta is one of Canada's top tourist destinations. We want to support economic development and tourism in the province by offering discounted excursions to our local and international guests.

Optional excursions are proudly sponsored by Edmonton Global. Make the most of your time in Banff by networking with industry peers! Join us on a half-day tour of some of Banff's most iconic tourist attractions, including Banff Townsite, Lake Louise, and Johnston Canyon!

All excursions require registration in advance and have limited capacity.

Optional Excursions



Banff Townsite & Wildlife Viewing Tour

Nov 30th, 8-12 PM

Visit Banff Highlights with your own interpretive guide by private van, with short stops to explore the environment. Highlights include Banff Springs Hotel, Bow Falls, Surprise Corner, Banff Hoodoos, as well as Lake Minnewanka (the largest lake inside Banff National Park) including a guided lakeshore walk.



Optional Excursions



Lake Louise Winterland Tour - Nov 30th, 8-12 PM

Make the most of your winter experience in the Rockies and enjoy a half-day tour of iconic Lake Louise. Join your guide for a bit of snowshoeing or even rent some ice skates and skate on the lake. Or if you prefer to look at the magnificence of the Victoria Glacier from the comfort of a warm chair, why not enjoy some lunch or tea inside the Chateau Lake Louise. On the way to and from Lake Louise, take in the incredible views of the Rockies and learn all about Banff's colourful natural and human history from one of Banff's best interpretive guides. Includes professional interpretive guide, return transportation from Banff and snowshoe rental, as well as hot chocolate & cookies.



Optional Excursions



Johnston Canyon Icewalk - Nov 30th, 8-12 PM

Trek through Johnston Canyon to a world of frozen waterfalls and pillars of blue ice. During the Johnston Canyon Icewalk®, you will learn about the formation of the canyon, pick out fossil corals in the rocks, and photograph the incredible pillars of ice as you walk through the canyon bottom and over suspended catwalks. Your professional guide leads you past waterfalls frozen in mid-stream, and through a short tunnel for a close-up view of the Johnston Canyon Lower Falls! Guide, transport and ice cleats included.



How to Engage

Visit our website

Learn more about our tech accelerator programs across the globe, browse through thought leadership articles in our blog, and more!
plugandplaytechcenter.com



Visit our Alberta HQ!

The Ampersand, North Tower
#2020N 140 4th Ave SW
Calgary Alberta, Canada
T2P 3N3



Subscribe to our monthly newsletter



Stay up to date on the latest events, exclusive news and insights, as well as Plug and Play's international updates.
[Subscribe Here](#)

Follow us on LinkedIn



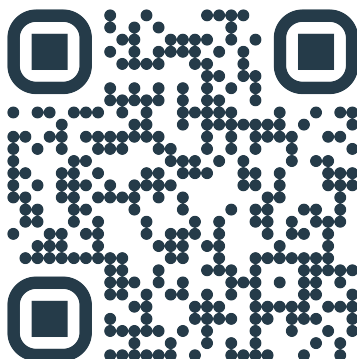
@PlugandPlayCanada
@PlugandPlayTechCenter
#PNPTCAAlberta

Get in touch



Want additional information?
Have any queries?
Reach out to the team:
alberta@pnptc.com

Alberta
EXPO Day
Brella App



Simply go to
<https://next.brella.io/join/pnptcalberta>

Make your profile-use our access code:

"pnptcalberta" to login

Brella Instructions

Step 1

SIGN IN

Sign in here: <https://next.brella.io/join/pnptcalberta>

The event code is: pnptcalberta

You can use the web version, or get the app at the Apple Store or Google Play.

Step 2

ABOUT YOURSELF

Each person answers a few questions about themselves and who they would like to meet (offering and seeking). After this, Brella's unique algorithm recommends the most relevant connections for you.

Step 3

VIEW ATTENDEES

Scroll through the connections and begin scheduling your meetings.

Step 4

BOOK MEETINGS

Once you find a person with whom you would like to meet, click on Suggest Meeting. After clicking you can select a potential time. If the other person accepts your request, you will be auto assigned a designated table to meet at in the Brella Networking Area. You can find a map in the 'Event Info' tab of Brella.

OTHER USEFUL INFORMATION

- a) Brella time slots are designed for shorter, introductory meetings to help maximize the number of meetings that can take place.
- b) You can control what times appear open (under the Meetings & Timetable tab), and we suggest that you remove times from your Brella calendar when you know you won't be available for others to meet you.



PLUGANDPLAY

pnptc.com

